

# 9 Ash Street – Floor Plans

Lot 1 – 146sqm



FIRST FLOOR



GROUND FLOOR

# 9 Ash Street – Floor Plans

Lot 2 – 146sqm



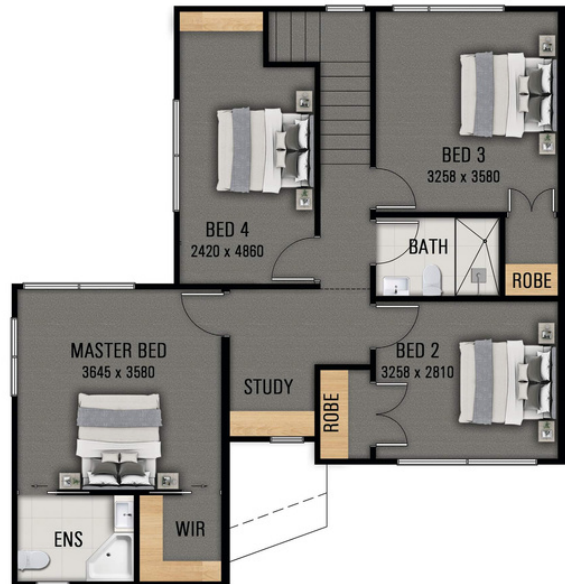
FIRST FLOOR



GROUND FLOOR

*Artist impression*

Lot 3 - 146sqm



## FIRST FLOOR



## GROUND FLOOR

*Artist impression*



# 9 Ash Street – Floor Plans

Lot 4 – 146sqm



[buildsmarthomes.co.nz](http://buildsmarthomes.co.nz)



FIRST FLOOR



GROUND FLOOR

*Artist impression*



**TITOKI**  
ALECTRYON EXCELSUS



**BLOODGOOD RED**  
JAPANESE  
MAPLE ACER PALMATUM



**CAMELIA**  
PARADISE  
HELEN CAMELIA HEDGE

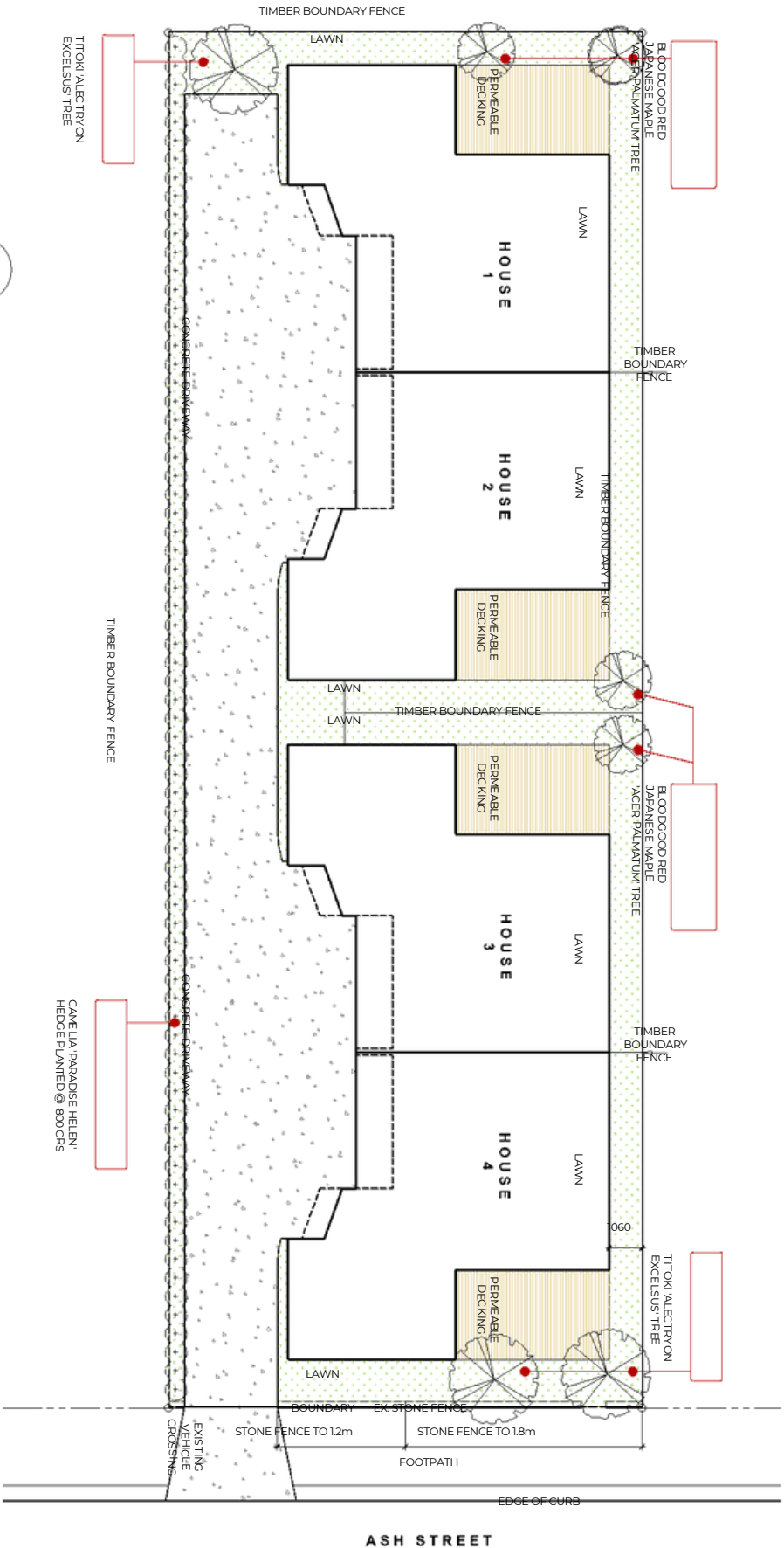
**NOTE:**

PRIOR TO PLANTING ENSURE ALL DEBRIS AND CONTAMINATED MATERIALS REMOVED FROM SITE. ENSURE WATER SUPPLY TO FACILITATE IRRIGATION IS IN PLACE.

TREE PITS TO RECEIVE 70% PREMIUM TOPSOIL, 30% COMPOST AS BACKFILL TO A DEPTH OF 1m.

ALL PLANTS TO BE OF A HIGH STANDARD & PLANTED AS PER BEST HORTICULTURAL PRACTICES. PLANTING TO INCLUDE 12 MONTH SLOW RELEASE FERTILISER APPLIED AT MANUFACTURER'S RECOMMENDED RATES.

THOROUGHLY WATER ALL GARDEN AREAS DURING PLANTING.



**LANDSCAPE PLAN**

scale: 1:150@ A3

**9 Ash Street**  
Landscape Plan